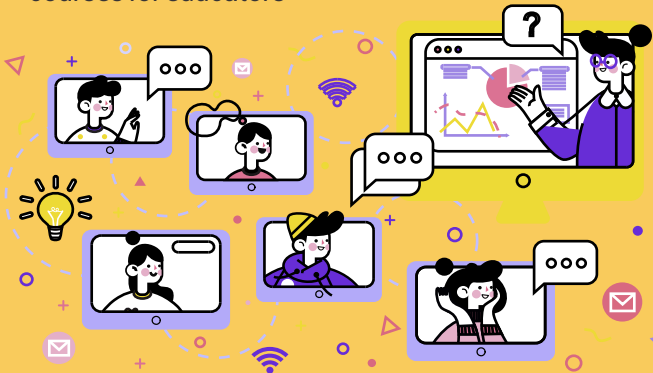


Employees with cloud computing skills are in high demand as organisations move towards remote work and learning as part of national social distancing measures. Give your students a global competitive edge by becoming an Industry Certified Cloud Educator.

This programme provides educators with the requisite knowledge, techniques, and industry recognition to equip their students with cloud computing skills. At the end of the programme, participants will sit for the Amazon Web Services (AWS) Certified Cloud Practitioner certification.

Benefits of Being an Industry Certified Cloud Educator:

- Access AWS Academy's free ready-to-teach cloud computing curriculum
- Obtain 50% discount on AWS certification exam fees for your students
- Access certification lounges at AWS Summits worldwide
- Exclusive membership to ASEAN Cloud Educators Network (ACEN) hosted by SP
- Special discounts on SP cloud computing specialization courses for educators



Course Structure

A hands-on and convenient online course that includes both self-paced study and virtual classroom sessions on the following topics:

AWS Academy Cloud Foundation

- Cloud Concepts Overview
- Cloud Economics and Billing
- AWS Global Infrastructure Overview
- Cloud Security
- Networking and Content Delivery
- Compute
- Storage
- Databases
- Cloud Architecture
- Automatic Scaling and Monitoring

Applied Teaching and Learning

- Design and Effectively Facilitate Online Training
- Pedagogy Tips for Cloud Educators

Pre-Requisites

- Participant is an educator at an Institute of Higher Learning (IHL)
- Knowledge or experience in cloud computing is not required
- Successful completion of AWS Academy registration via the following link:

<https://www.awsacademy.com/InstitutionApplication>

Course Fees

SGD 300 per participant
(includes AWS Cloud Practitioner Exam Fee)

Launch Special: SGD 250 per participant
for group enrollments (5 or more participants)

Dates and Delivery

Programme Commencement : 29 June 2020

Duration : 24 Hours

Virtual Class Meeting Schedule*:

• Monday, 29 June 2020, 1700hrs to 1900hrs (GMT +8)

• Monday, 06 July 2020, 1700hrs to 1900hrs (GMT +8)

• Monday, 13 July 2020, 1700hrs to 1900hrs (GMT +8)

• Monday, 20 July 2020, 1700hrs to 1900hrs (GMT +8)

• Monday, 27 July 2020, 1700hrs to 1900hrs (GMT +8)

• Monday, 3 August 2020, 1700hrs to 1900hrs (GMT +8)

*Schedule is tentative and may change

Enrollment and Payment Details

Email us at
enquiry@spi.edu.sg